

What are the main findings of RISE’s analysis of hate crime data?

By analysing PSNI statistics on racially motivated incidents and crimes over a relatively long period (2007-2025)¹ of comparable data, we can start to identify patterns in the data which could point towards effective policy and practice changes, as well as suggest where resources may need to be targeted to protect and support victims and prevent recurrences. Using a long data period means that the findings are less likely to be skewed by larger scale events such as the August 2024 and July 2025 riots in Belfast and Ballymena.

Please note that a large number of hate incidents go unreported; this analysis reflects incidents where the victim has had the confidence to go to the PSNI.

Which Local Government Districts have experienced more race hate crime?

Belfast has experienced a higher than average level of race hate crime (2007-2025), relative to other Local Government Districts, see Table 1. The 8,847 incidents recorded over the period account for 45% of all recorded hate incidents and translate to a higher incident rate per head of population, 26 per 1000.

Which District Electoral Areas (DEAs) have experienced more race hate crime?

A fifth of Northern Ireland’s 80 DEAs (16) accounted for just over half (52%) of the total amount of recorded race hate crime, see Table 2. In Belfast, **Botanic and Titanic** had levels of hate crime that were significantly higher than other Belfast DEAs. In Mid and East Antrim, **Ballymena** had levels of hate crime that were significantly higher than other Mid and East Antrim DEAs.

Which Wards have experienced more race hate crime?

The main source of variability in hate crime is at Ward level, with some Wards experiencing much more hate crime than other Wards in the same DEA, see Table 3 and Figure 1, incident data. **10% of all Wards (42) accounted for half (51%) of the total amount of recorded hate crime. 22 of these Wards are in Belfast.**

¹ Racially motivated crime and incident data is not available at ward level before 2007.

Table 1: Areas differences in hate crime (2007-2025), in terms of events designated as incidents and crimes, and the rate at which events are designated as hate incidents only (Incident Rate > Crime Rate).

	Recorded Incidents			Additionally Recorded as Crimes			Incident Rate > Crime Rate		
	% Total	No.	Per 1,000	% Total	No.	Per 1,000	%	Difference in Number	Per 1,000
Belfast	45%	8847	26	45%	5966	17	33%	2881	8.34
Antrim Newtownabbey	7%	1376	9	7%	994	7	28%	382	2.63
Mid & East Antrim	6%	1187	9	7%	870	6	27%	317	2.28
Armagh Banbridge & Craigavon	9%	1764	8	9%	1251	6	29%	513	2.35
Derry & Strabane	6%	1178	8	6%	777	5	34%	401	2.66
Lisburn Castlereagh	5%	959	6	5%	603	4	37%	356	2.39
Mid Ulster	5%	952	6	5%	704	5	26%	248	1.65
North Down & Ards	5%	1002	6	4%	520	3	48%	482	2.95
Causeway Coast & Glens	4%	849	6	4%	470	3	45%	379	2.67
Newry Mourne & Down	5%	955	5	5%	718	4	25%	237	1.29
Fermanagh & Omagh	3%	581	5	3%	429	4	26%	152	1.30
Total		19650			13302			6348	

Table 2: Areas differences in hate crime (2007-2025), in terms of events designated as incidents and crimes, and the rate at which events are designated as hate incidents only (Incident Rate > Crime Rate) – DEAs accounting for 52% of hate

		Recorded Incidents			Additionally Recorded as Crimes			Incident Rate > Crime Rate		
		% Total	No.	Per 1,000	% Total	No.	Per 1,000	%	Difference in Number	Per 1,000
Belfast	Botanic	16%	3211	64	15%	2051	41	36%	1160	23
Belfast	Titanic	7%	1436	39	8%	1027	28	28%	409	11
Belfast	Castle	6%	1129	34	6%	807	24	29%	322	10
Mid & East Antrim	Ballymena	4%	706	29	4%	546	23	23%	160	7
Belfast	Oldpark	5%	971	28	5%	696	20	28%	275	8
Belfast	Court	4%	756	22	4%	508	15	33%	248	7
Antrim Newtownabbey	Antrim	2%	471	20	3%	349	15	26%	122	5
Derry & Strabane	The Moor	2%	322	19	2%	211	12	34%	111	6
Armagh Banbridge & Craigavon	Portadown	3%	536	16	3%	381	12	29%	155	5
Antrim Newtownabbey	Macedon	2%	313	15	2%	225	11	28%	88	4
Mid Ulster	Dungannon	2%	392	15	2%	314	12	20%	78	3
Causeway Coast & Glens	Coleraine	2%	347	15	1%	180	8	48%	167	7
Newry Mourne & Down	Newry	2%	355	14	2%	268	11	25%	87	3
Armagh Banbridge & Craigavon	Lurgan	2%	472	12	3%	353	9	25%	119	3
Derry & Strabane	Foyleside	1%	212	12	1%	145	8	32%	67	4
Fermanagh & Omagh	Omagh	1%	220	12	1%	171	9	22%	49	3
Total			19650			13302			3617	

crime

Table 3: Areas differences in hate crime (2007-2025), in terms of events designated as incidents and crimes, and the rate at which events are designated as hate incidents only (Incident Rate > Crime Rate) – 42 Wards account for 51% of hate crime (not including Roeside).

Local Government District	District Electoral Area	Ward	Recorded Incidents			Additionally Recorded as Crimes			Incident Rate > Crime Rate		
			% Total	No.	Per 1,000	% Total	No.	Per 1,000	%	Difference in Number	Per 1,000
Antrim Newtownabbey	Antrim	Springfarm	0.6%	127	23	0.6%	84	15	34%	43	8
		Steeple	0.5%	101	27	0.6%	77	20	24%	24	6
	Glengormley Urban	Glengormley	0.5%	92	27	0.5%	69	20	25%	23	7
Armagh Banbridge & Craigavon	Lurgan	Mourneview	0.7%	131	24	0.8%	108	20	18%	23	4
	Portadown	Ballybay	0.7%	147	27	0.9%	115	21	22%	32	6
		Corcrain	0.7%	133	24	0.7%	89	16	33%	44	8
		<u>Killycomain</u>	0.9%	186	35	1.0%	129	25	31%	57	<u>11</u>
Belfast	Black Mountain	<u>Beechmount</u>	0.9%	176	33	0.8%	110	20	38%	66	<u>12</u>
		<u>Blackstaff</u>	4.6%	908	120	4.8%	642	85	29%	266	<u>35</u>
	<u>Botanic</u>	<u>Central</u>	8.4%	1655	107	7.5%	994	64	40%	661	<u>43</u>
		Ormeau	1.2%	236	36	1.2%	163	25	31%	73	11
		Windsor	1.9%	378	33	1.8%	239	21	37%	139	12
		Bellevue	0.9%	177	33	1.0%	137	25	23%	40	7
	Castle	Chichester Park	0.7%	135	25	0.6%	83	15	39%	52	10
		<u>Duncairn</u>	3.2%	619	74	3.3%	443	53	28%	176	<u>21</u>
		Fortwilliam	0.7%	130	28	0.6%	86	18	34%	44	9
	Court	Clonard	0.8%	150	25	0.8%	104	17	31%	46	8
		<u>Falls</u>	1.0%	189	36	0.9%	114	22	40%	75	<u>14</u>
		Shankill (Belfast)	0.7%	145	23	0.8%	108	17	26%	37	6
		Woodvale	0.7%	145	28	0.9%	117	23	19%	28	5
		Cliftonville	0.7%	131	23	0.8%	104	18	21%	27	5
	Oldpark	<u>New Lodge</u>	1.1%	221	45	1.1%	149	31	33%	72	<u>15</u>
		<u>Water Works</u>	1.5%	304	44	1.6%	216	31	29%	88	13
	<u>Titanic</u>	Ballymacarrett	0.9%	175	30	1.0%	128	22	27%	47	8
		<u>Beersbridge</u>	1.9%	375	57	1.9%	259	39	31%	116	<u>18</u>
		Bloomfield	1.2%	227	39	1.2%	154	26	32%	73	12
		Connswater	0.9%	169	29	0.9%	117	20	31%	52	9
		Sydenham	0.6%	126	23	0.6%	83	15	34%	43	8
		<u>Woodstock</u>	1.9%	364	57	2.2%	286	44	21%	78	12
	Causeway Coast & Glens	Causeway	<u>Portrush & Dunluce</u>	0.5%	90	33	0.4%	55	20	39%	35
Coleraine		<u>Moundsandel</u>	0.9%	173	45	0.6%	81	21	53%	92	<u>24</u>
*(Limavady)		<u>(Roeside)</u>	0.0%	55	21	0.0%	17	6	69%	38	<u>14</u>
Derry & Strabane	Foyleside	Northland	0.6%	116	24	0.6%	81	17	30%	35	7
	The Moor	<u>City Walls</u>	1.4%	277	85	1.4%	180	56	35%	97	<u>30</u>
Fermanagh & Omagh	Omagh	Dergmoney	0.3%	65	25	0.4%	58	22	11%	7	3
Lisburn Castlereagh	Lisburn North	<u>Hilden</u>	0.7%	143	37	0.6%	85	22	41%	58	<u>15</u>
	Lisburn South	Lagan Valley	0.4%	80	24	0.4%	55	16	31%	25	7
Mid & East Antrim	Ballymena	Ballykeel	0.6%	112	37	0.6%	85	28	24%	27	9
		<u>Castle Demesne</u>	1.5%	288	65	1.7%	225	51	22%	63	<u>14</u>
		<u>Fair Green</u>	1.1%	214	50	1.3%	173	41	19%	41	10
Mid Ulster	Dungannon	Ballysaggart	1.0%	203	40	1.3%	170	34	16%	33	7
Newry Mourne & Down	Newry	<u>Ballybot</u>	0.8%	163	38	0.9%	121	28	26%	42	<u>10</u>
North Down & Ards	Bangor Central	<u>Harbour</u>	0.7%	137	38	0.5%	68	19	50%	69	<u>19</u>
Total				19650		13302		1763			

The 3 DEAs in bold in Table 3 experienced significantly more hate crime relative to DEAs in the same LGD. Similarly, Wards in bold experienced significantly more hate crime relative to other Wards in the same DEA. Two DEAs are underlined, Botanic and Titanic. In both DEAs a greater number of hate crimes are recorded as incidents only, relative to other DEAs. Similarly, some Wards were

distinct in having more hate crimes recorded as incidents only, relative to other Wards in the same DEA.

What factors are related to an increased prevalence of hate crime?

Related to an increased prevalence of hate crime:

- An increased % of members of the public from minority ethnic backgrounds in wards (taken from the Census 2021 data)
- Higher levels of Ward deprivation (IMD scores, taken from the IMD 2017 data), and inequality in deprivation levels within DEAs (subtracting the score from the least deprived Ward from the most deprived Ward)

Hate crime and the proportion of the population from a minority ethnic background

Figure 1 shows that statistically **there is a positive relationship between Wards having an increased % of people from ethnic backgrounds other than white and hate crime that has accumulated since 2007**. In other words, as the % of people of other ethnicities goes up, hate crime increases. We have plotted a 'line of best fit' for each LGD. The grey triangles are the actual raw data, with the placement of each triangle being determined by its ethnicity % and its hate incidents %. The lines are based on *predicting* the % of hate incidents a Ward should likely have, given its % other ethnicities. If we take Central Ward as an example, given that it has an increased % of people of other ethnicities, the line shows a prediction of how high the % of hate crime *could be*. There is a difference between the predicted point on the line, and the actual grey data point, consistent with it being an imprecise prediction, but a prediction, nonetheless.

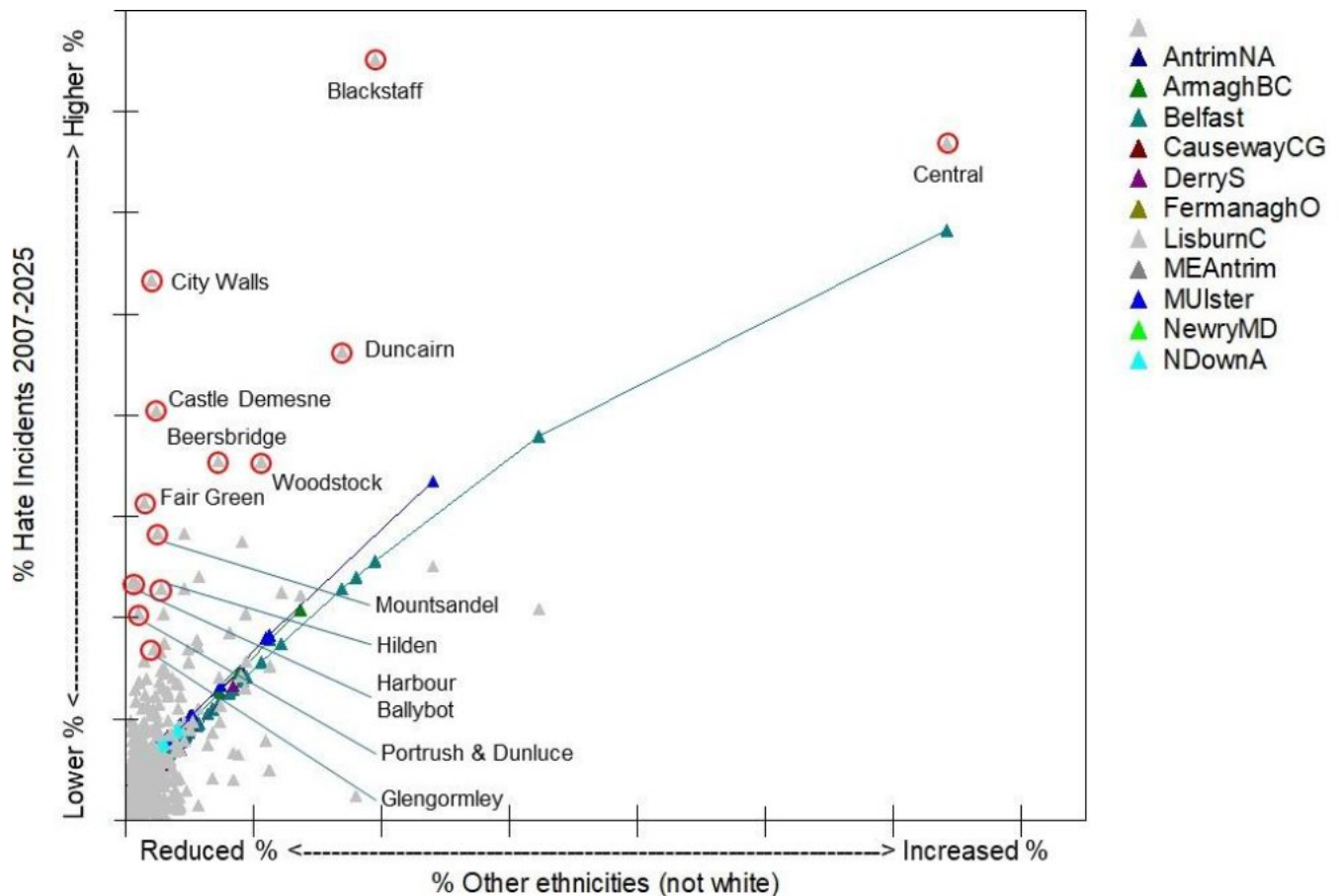


Figure 1: The relationship between the % of ethnicities other than white, at Ward level, and the % of accumulated hate crime (2007-2025)

This relationship between other ethnicities and hate crime **helps to account for some of the area differences noted in Table 3**. However, we have added circles around anomalous Wards. **These Wards are experiencing higher levels of hate crime than would be predicted.** We are taking Ward variation in other ethnicities into account, and, as we show below, also Ward variation in deprivation. There is clearly some other factor(s) influencing the prevalence of hate crime in these Wards, beyond the presence of people from other ethnicities and beyond deprivation levels.

It should be noted that there is nothing inevitable about increasing rates of hate crime in more ethnically diverse areas; nor are victims of hate crime to blame for the actions of a racist few.

Hate crime and deprivation

Figure 2 shows that **there is a positive relationship between Wards being more deprived and hate crime that has accumulated since 2007**. The thicker, purple line shows the average

relationship between deprivation and hate crime, measured at Ward level, across DEAs. As there is significant variability in how much hate crime increases as deprivation increases, across DEAs, we have plotted DEA-level lines of best fit. Similar to Figure 1, the grey triangles are the actual raw data, with the placement of each triangle being determined by its deprivation score and its hate incidents %. The lines are based on *predicting* the % of hate incidents a Ward should likely have, given its deprivation score. If we take Blackstaff as an example, given that it has an increased deprivation score, the line shows a prediction of how high the % of hate crime could be. There is a difference between the predicted point on the line, and the actual grey data point, consistent with it being an imprecise prediction, but a prediction, nonetheless.

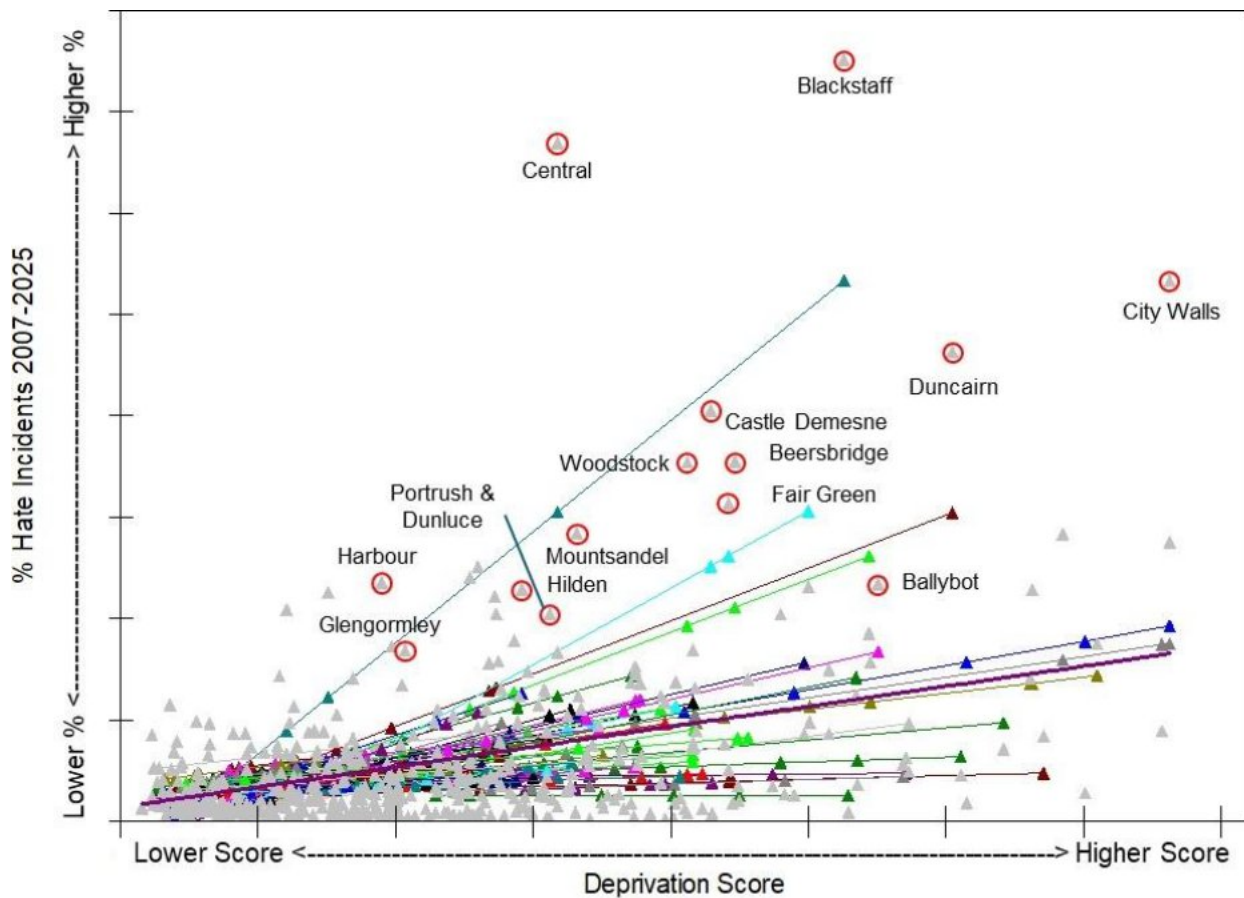


Figure 2: The relationship between deprivation scores, at Ward level, and the % of accumulated hate crime (2007-2025)

This relationship between deprivation and hate crime helps to account for some of the area differences noted in Table 3. However, as explained, **the circled Wards are anomalies. These Wards are experiencing higher levels of hate crime than would be predicted. We have taken Ward variation in both deprivation and other ethnicities into account- and yet, there is a higher**

level of hate crime than would be predicted. There is some other factor(s) influencing the prevalence of hate crime in these Wards, beyond the presence of people from other ethnicities and beyond deprivation levels.